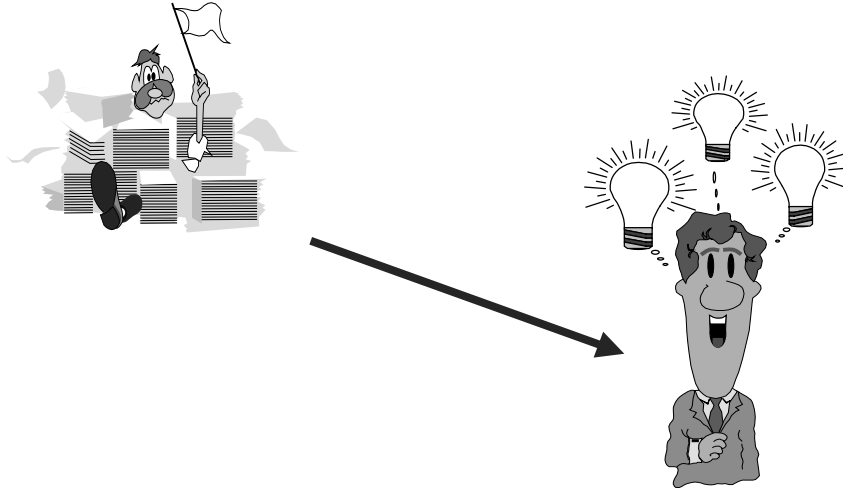


Introduction

This presentation introduces PSINet presenters, explains what to expect over the three day tutorial and covers the history of PSINet. PSINet services are also briefly explained.



- Folder
 - Agenda
 - Evaluation
 - Questionnaire
- Book
 - Slides
 - Interactive Session
 - Helpful Resources
 - Subnetting Information
 - Acronym Translator



Interactive Session

- Day One
 - Host Name & IP Address Assignment
(includes subnetting)
 - Routing Tables
- Day Two
 - Primary Name Server Configuration
- Day Three
 - Security Policy Development



Open Forum

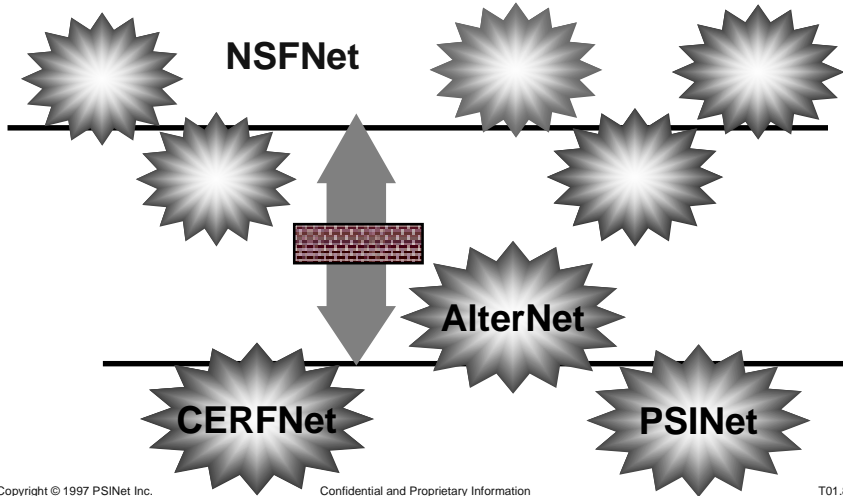
- Wednesday Afternoon
 - Answer Questions
 - From Completed Questionnaires
 - Not Answered During Presentations

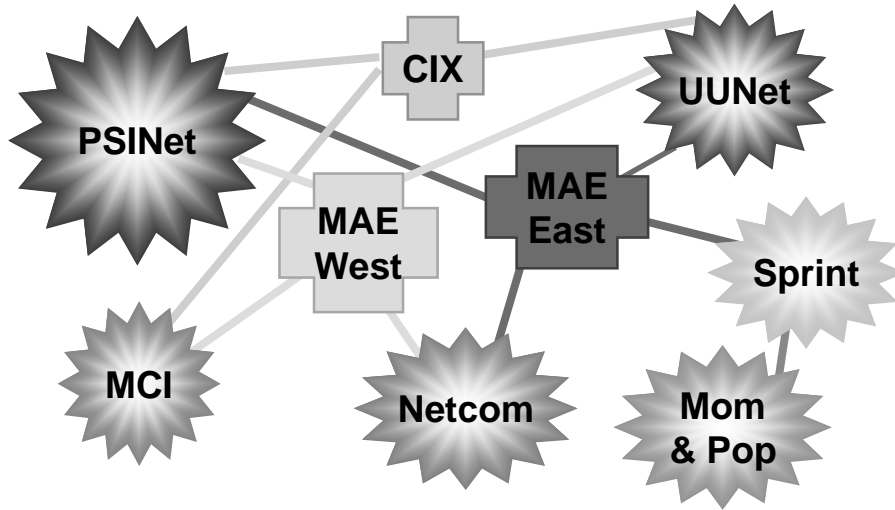
PSINet & Internet History

- Government, research

ARPANet









PSINet History

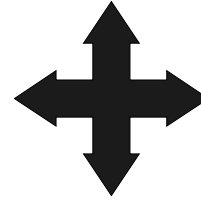
- 1985 NYSERNET**
 - NYS Regional Network
 - Connected to NSFNet Backbone
- 1989 PSINet Created**
 - Created from NYSERNET
 - Commercial, national Internet Service Provider
- 1990 PSINet Started Operation**
 - Leased line service
 - PSILink





PSINet History

- 1991 CIX**
 - Commercial Internet Exchange
 - PSINet, CERFNet, AlterNet
 - Located in California
- 1992 Frame Relay**
 - PSINet implemented this technology
- 1993 ISDN**
 - PSINet is the first ISP to deliver ISDN service
- 1994 InterRamp**
 - Individual IP Service





PSINet History

- ❑ 1995
 - ❑ February
 - ❑ Pipeline
 - ❑ May
 - ❑ PSIX on NASDAQ
 - ❑ Summer
 - ❑ InterCon
 - ❑ EUNet GB
 - ❑ Software Ventures
 - ❑ Joint venture with Hansol Paper Co., South Korea
 - ❑ December
 - ❑ 240+ POPs



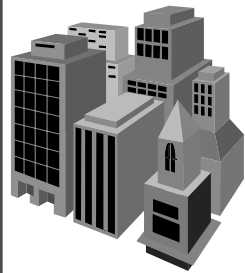
PSINet History

- 1996
 - June
 - Consumer to Wholesale
 - October
 - IntraNet service
 - December
 - Brussels, Belgium
- 1997
 - Europe
 - ????





PSINet Organization



Herndon, VA

- Sales
- Marketing
- Circuit Provisioning
- Customer Satisfaction
- Legal
- Billing & Accounting
- Field Service

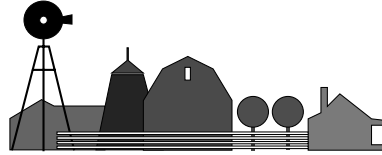


Other:

- Chicago
- Santa Clara
- Atlanta
- Dallas

Troy, NY

- Network Operations
- System Administration
- Technical Support
- Field Service



Copyright © 1997 PSINet Inc.

Confidential and Proprietary Information

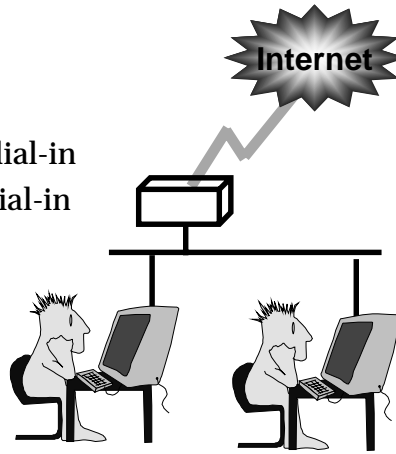
T01.14

PSINet *Useful Phone Numbers*

- Technical Support
(518) 283-8860
- Customer Satisfaction, Billing,
Circuit Provisioning
(703) 709-5455
- Listen to the phone trees



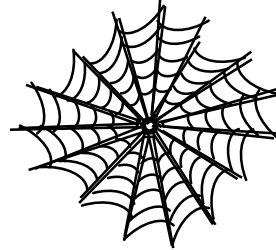
- LAN-On-Demand
 - LAN connection
 - IP connectivity
 - LAN-Dial: Analog dial-in
 - LAN-ISDN: ISDN dial-in





PSINet Services

- PSIWeb**
 - PSINet host web site
- Remote Access**
 - Bulk individual IP service
- InterPPP**
 - Dedicated 56K Circuit
 - PPP connection
- InterFrame**
 - Dedicated Circuit
 - Frame Relay technology





PSINet Services

InterMAN

- Dedicated Circuit
- Metropolitan Area Network
- T1 to T3 speeds



IntraNet

- Multi-site Intranet & Internet connectivity
- Dedicated Circuit

- RouteWaller
 - Dynamic packet filtering
 - InterFrame
- Secure Enterprise
 - Firewall
 - InterFrame

