

# Remote Access Dialer Guide

## Enabling Global Roaming and iPass

Global Roaming and iPass are enabled by the **Account Administrator** from their private administration web page. This can be reached at **ams.psinet.com** via the Account Administrator's login name and password. The Account Administrator must agree to the iPass service agreement, one time, for his entire account.

The agreement states that a fee of \$0.20 a minute will be applied for all calls originated outside the U.S. and \$0.04 a minute will be applied for all calls originated within the U.S., including Puerto Rico and the U.S. Virgin Islands.

To sign the agreement for the first time, select **iPass Roaming** under the Account Administration command.

By clicking on **By User Name**, or **With Details**, a list of all the child accounts will appear. Clicking on the desired user name will bring up a **Customer Profile** where the Account Administrator can edit the account attributes.

The screenshot shows a web form for account administration. It includes fields for User Name (tf00000x), Status (Live), and Pay Plan (\$24.95/Month FLAT RATE). Below these are sections for Service Options (Password, Port Limit: 1), Value Added Services (Mail Password, Mail Alias), and Roaming Properties (iPass Roaming, PSINet Japan Roaming, PSINet Europe Roaming, PSINet UK Roaming, all checked).

## PSINet Global Roaming Dialer

See PSINet Global Roaming Dialer at <http://www.psinet.com/access/ipass/index.html> for information on and downloading this tool for Remote Access connections.

Start the Dialer application. In the **Options** pulldown menu, select **User Information** and enter your:

- Login Name (Account ID)
- Login Password.
- Domain Name (selection displayed, if iPass phonebook has been selected).

The screenshot shows a dialog box titled "User Information" with fields for Login Name (tf00000x), Login Password (\*\*\*\*\*), and Domain (psinet.com). There is a checkbox for "Save Password" and "OK" and "Cancel" buttons.

Then click **OK**. You may also enter an application file, such as netscape.exe in the new **Launch Pad** window. This will start the Netscape browser once your connection is made.

In the **PSINet Global Roaming Dialer** window click the **Phone Books** button and select the appropriate Phone Book:

- PSINet POPs-list of countries included in PSINet's Network (US, Japan, UK or Europe).
- iPass POPs -list of all countries accessible outside PSINet's network.

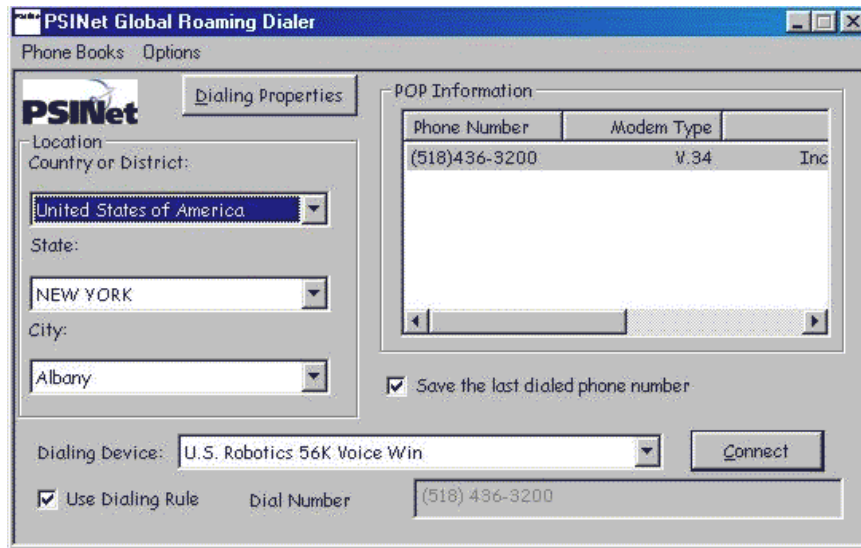
From the **Location** drop down menus select the appropriate Country or District, State, and City.

From the **POP Information** window, select a POP phone number.

**Warning:** We do not promise that any of the PSINet access phone numbers listed by city are "local" or toll-free when dialed from your location. A phone number that shares your area code or appears to be located in your city or other geographic area may not necessarily be a "local" number to you. Substantial toll charges can result from dialing a number that you do not verify as "local" to your location or calling plan. We strongly encourage you to contact your local telephone company before selecting or using any PSINet access phone number.

The **Dialing Device** should already be selected.

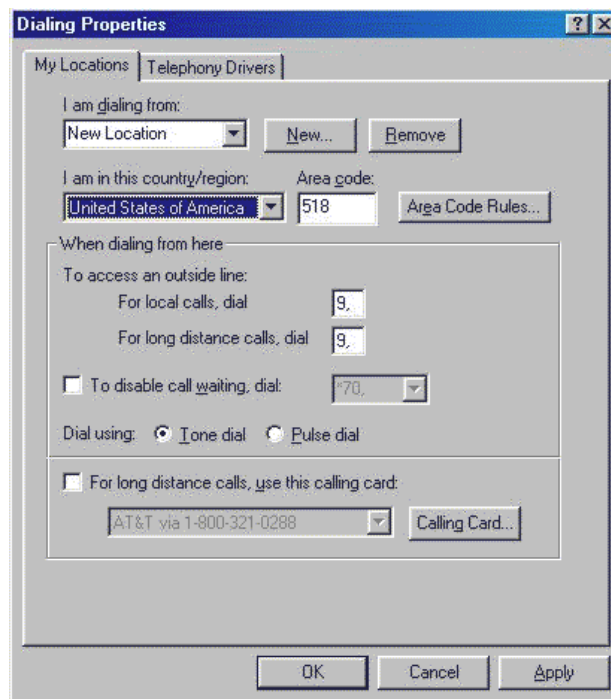
# Remote Access Dialer Guide (cont'd)



Select the **Dialing Properties** button and select the **My Locations** tab.

Complete the appropriate information for your location:

- Type in a new name for your current location.
- Select the current country/region.
- Key in the area code.
- Assign settings for phone number prefix, call waiting and dial type.



Click **OK** and then click **Connect** on the PSINet Global Roaming Dialer window.

**Note:** Another alternative for selecting a phone number is to uncheck the **Use Dialing Rule** option in the PSINet Global Roaming Dialer window. Unchecking this option activates the **Dial Number** dialog box for any phone number to be input, including adding a prefix or removing an area code.