

Important Router Information

Dear Valued Customer:

This packet includes **important information about your equipment** which should be reviewed by you prior to speaking with our Installations Group.

It is not a replacement for our Technical Support but is designed to help us help you get your internet connection up and running as quickly as possible.

Our Installations Group will work with you via one hour appointments. **Please review this packet and follow the setup flowchart prior to your initial appointment with your Installations Representative**

Thank you very much and welcome to the Internet.

Technical Support: (888) 774-4206

Enclosed are the following documents regarding your Internet equipment:

- **Router Setup Flowchart**
- **Connectivity Flowchart**
- **Configuration Print Out**
- **Configuration Instructions**

Additional documents for Leased Line Customers:

- **Astrocom CSU/DSU Diagram**
- **Important Circuit Information**

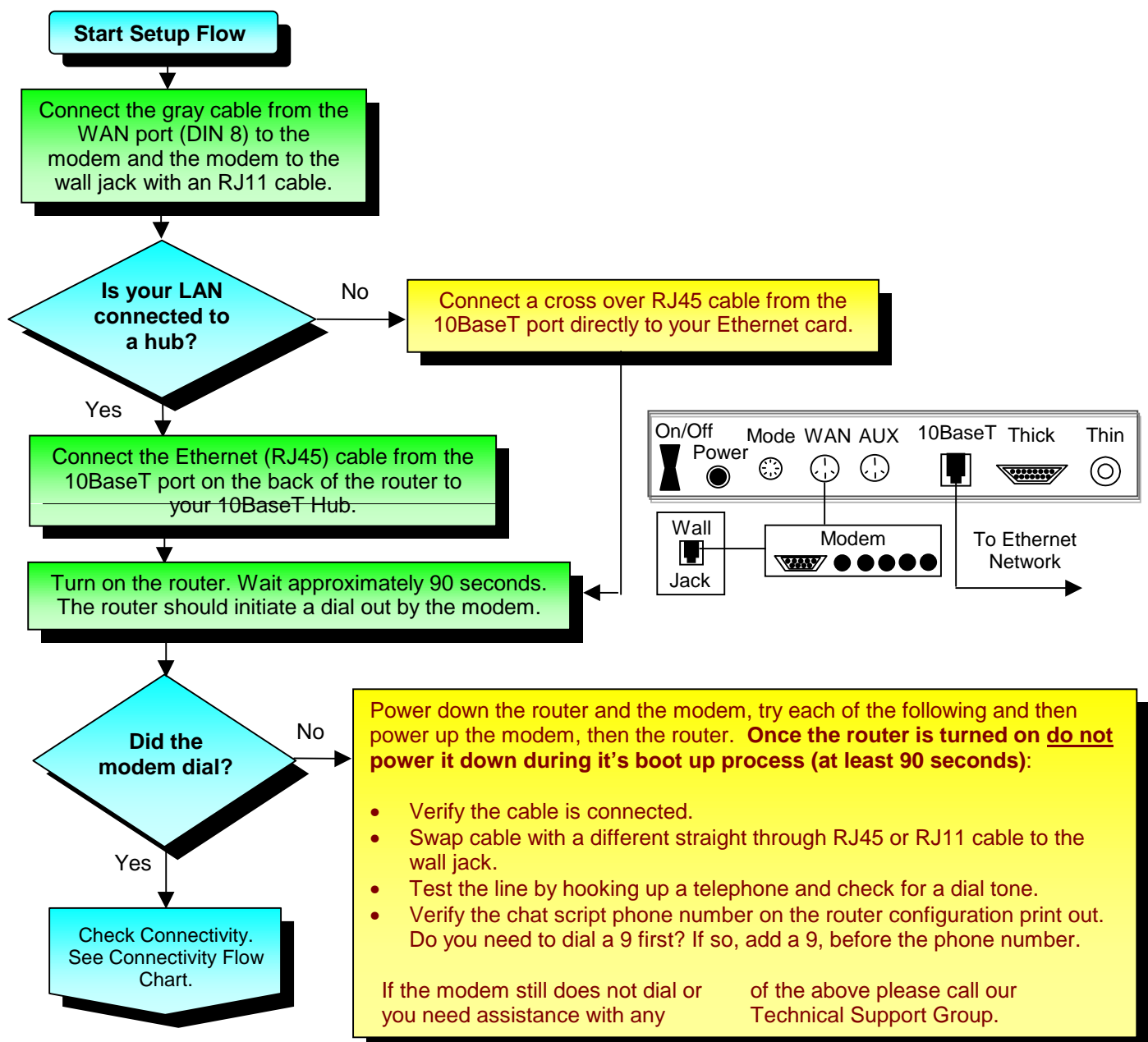
Setup: MicroRouter 900i for LAN-Dial

Instructions for connecting your MicroRouter 900i Router:

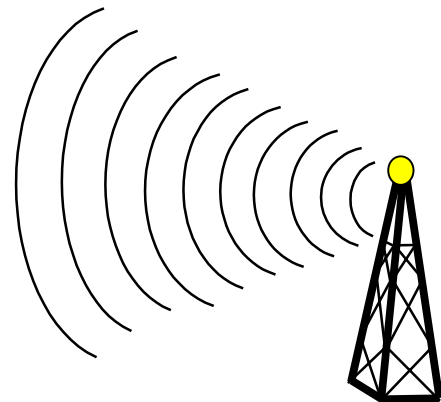
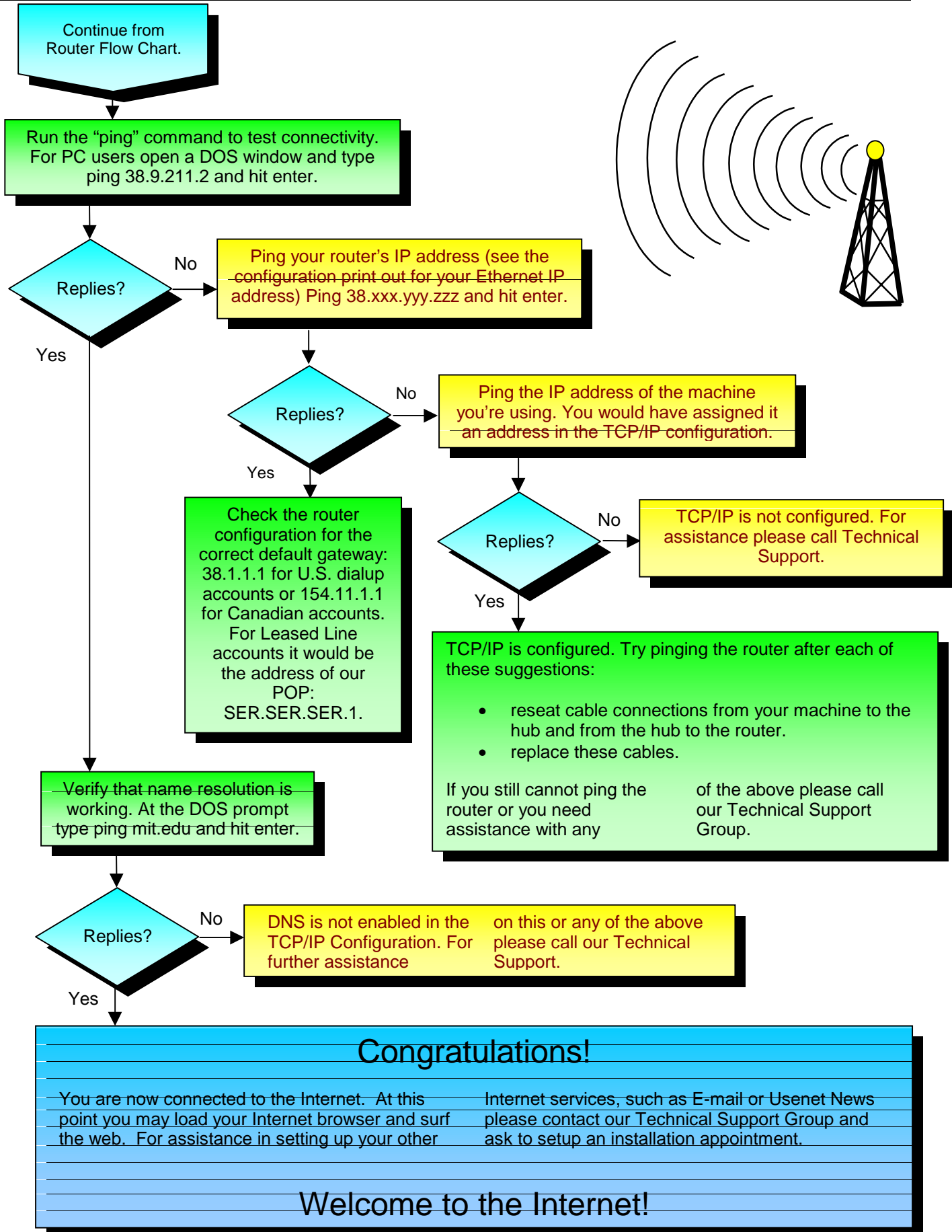
Prerequisites: Please run through the following flowchart to connect your equipment prior to scheduling your initial appointment with our Installations Group.

- Local Area Network (LAN) already setup
- TCP/IP configured on the individual workstations
- Analog telephone line installed by your telephone company

Your router has been shipped to you preconfigured. Please check the configuration print out to verify that the dial-up phone number is the number you want to be dialing into. Also, when the connection is up and running, don't forget to change the router password.



Connectivity:



Configuring the MicroRouter 900i for LAN-Dial

There are three different methods for setting up the MR900i, Software is provided for the MS Windows and for the Mac platforms to configure and manage the router. The other method is to connect a console to the Aux port of the router and directly access the shell (*note: once the machine has been initially given an IP address you can telnet to the router on the LAN.)

The MR900i comes with two cables, one to connect the console and one to connect the WAN. The gray cable has a male DB-25 connector (This is the Data or Wan cable), the black cable has a female DB-25 at one end (this is the AUX or Console cable). On the other end of both of these cables are special connectors that are ONLY for the MR900i, these are the only cables that can be used for this router.

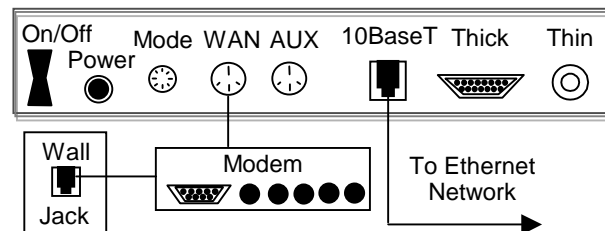
The Console cable should be plugged into the back of the router in the port labeled AUX. The terminal software should be set to 9600, 8, none, 1.

When you connect the console, and the router is plugged in, you can turn it on and watch it boot. You will get the prompt:

```
System initialization complete.  
Enter Password: letmein
```

There are two modes in the shell software, the first is standard mode - this is used to display configuration information and statistics. The standard mode prompt ends with the character: >. To make changes to the configuration you must be in the enhanced mode. The enhanced mode prompt ends with the character: #. You can enter the enhanced mode by issuing any 'set' command or by issuing the 'enhanced' command. You will be prompted to enter the password again to enter the enhanced mode. Once in the enhanced mode you can begin to configure the router.

```
>en  
#interface ethernet A  
#set ip address LAN.LAN.LAN.LAN  
#set ip mask 255.255.255.0  
#edit chat script  
  >append  
  >send atdt PHONE.NUM  
  >expect CONNECT  
  >.  
  >exit  
#interface WAN A  
#set WAN connect mode dial out script  
#set WAN connect timeout chat 120  
#set WAN serial type async  
#set WAN serial baud 115200  
4set WAN connect dialing at  
#set WAN serial fcntl hw  
#set WAN connect timeout inactivity 10  
#interface Ethernet A  
#add ip route 0.0.0.0 0.0.0.0 0 1  
#interface WAN A  
#set PPP auth PAP allow ACCT.ID PASSWORD  
#save
```



Key:

LAN.LAN.LAN.LAN = assigned router address
PHONE.NUM = dial-in POP number
ACCT.ID = assigned account ID
PASSWORD = assigned password

Answer yes to all Save and Change questions!!