

Important Router Information

Dear Valued Customer:

This packet includes **important information about your equipment** which should be reviewed by you prior to speaking with our Installations Group.

It is not a replacement for our Technical Support but is designed to help us help you get your internet connection up and running as quickly as possible.

Our Installations Group will work with you via one hour appointments. **Please review this packet and follow the setup flowchart prior to your initial appointment with your Installations Representative**

Thank you very much and welcome to the Internet.

Technical Support: (888) 774-4206

Enclosed are the following documents regarding your Internet equipment:

- **Router Setup Flowchart**
- **Connectivity Flowchart**
- **Configuration Print Out**
- **Configuration Instructions**

Additional documents for Leased Line Customers:

- **Astrocom CSU/DSU Diagram**
- **Important Circuit Information**

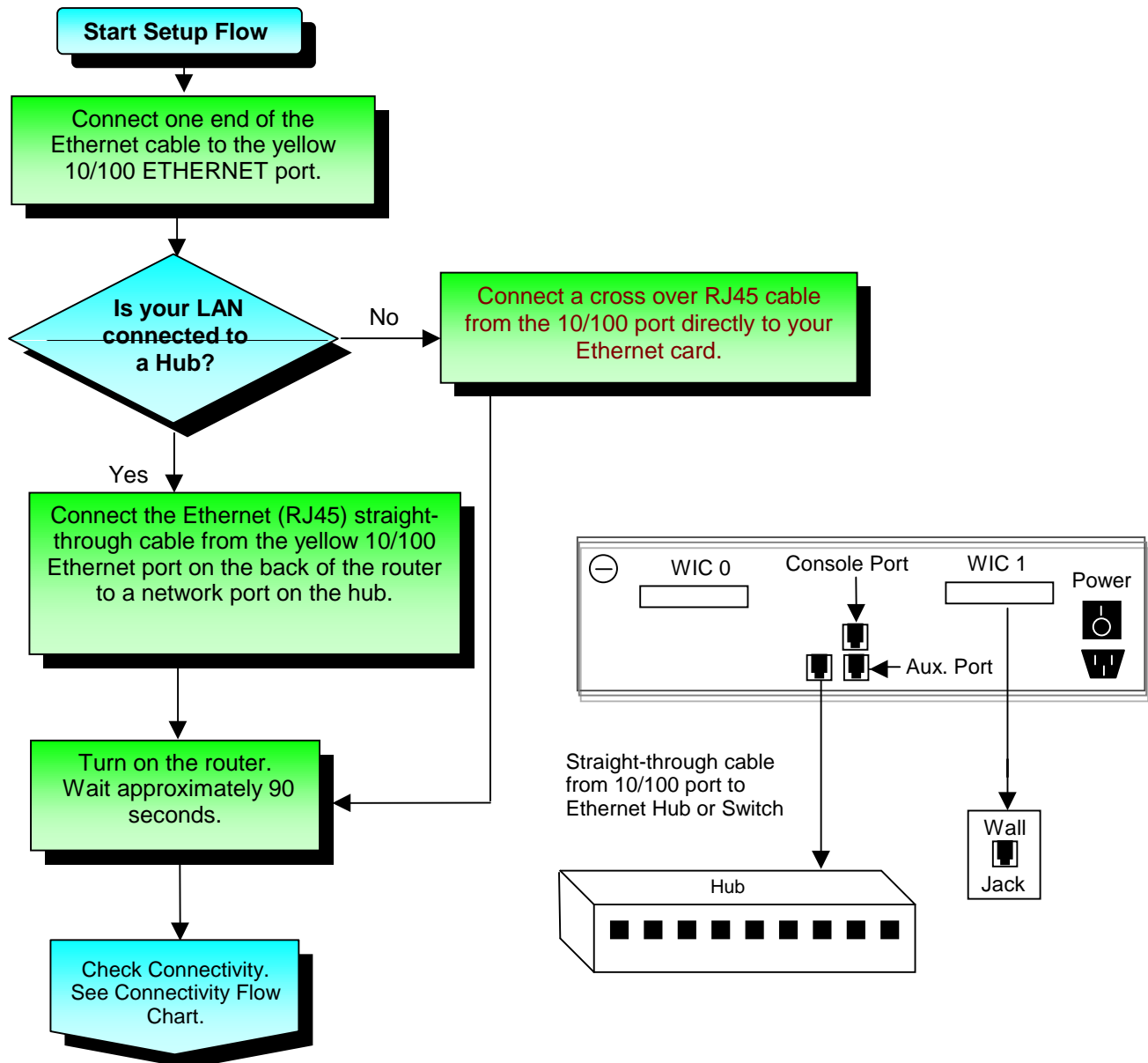
Setup: Cisco 1720 for LAN-ISDN

Instructions for connecting your Cisco 1720 Router:

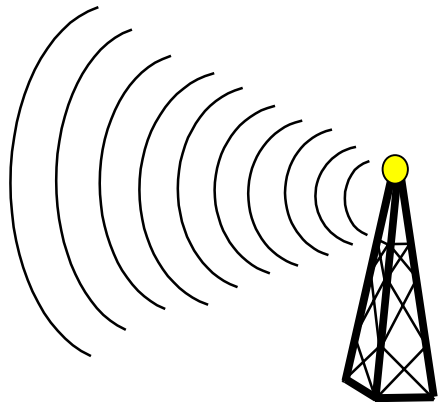
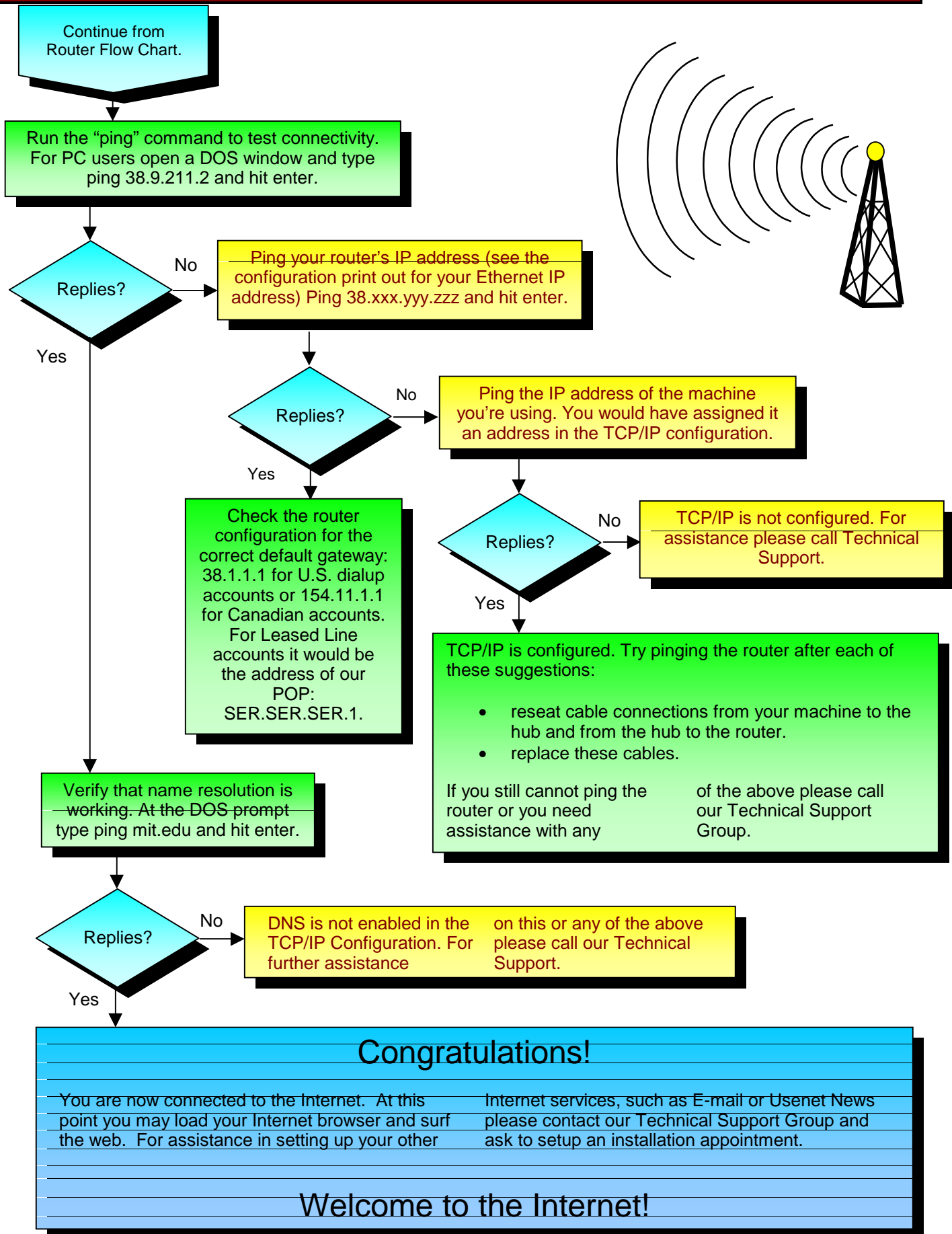
Prerequisites: Please run through the following flowchart to connect your equipment prior to scheduling your initial appointment with our Installations Group.

- Local Area Network (LAN) already setup
- TCP/IP configured on the individual workstations
- ISDN line installed by your telephone company
- 10/100-Mbps Ethernet hub or switch

Your router has been shipped to you preconfigured. Please check the configuration the number you want to be dialing into. Also, when the connection is up and running, don't print out to verify that the dial-up phone number is forget to change the router password.



Setup: Cisco 1720 for LAN-ISDN



Check the router configuration for the correct default gateway: 38.1.1.1 for U.S. dialup accounts or 154.11.1.1 for Canadian accounts. For Leased Line accounts it would be the address of our POP: SER.SER.SER.1.

Verify that name resolution is working. At the DOS prompt type ping mit.edu and hit enter.

TCP/IP is configured. Try pinging the router after each of these suggestions:

- reseat cable connections from your machine to the hub and from the hub to the router.
- replace these cables.

If you still cannot ping the router or you need assistance with any of the above please call our Technical Support Group.

DNS is not enabled in the TCP/IP Configuration. For further assistance on this or any of the above please call our Technical Support.

Congratulations!

You are now connected to the Internet. At this point you may load your Internet browser and surf the web. For assistance in setting up your other Internet services, such as E-mail or Usenet News please contact our Technical Support Group and ask to setup an installation appointment.

Welcome to the Internet!

Configuring the Cisco 1720 Via the Console

To configure a Cisco 1720, you must connect a console cable to the Console port of the router. A console cable and RJ45-RS232 adapter is provided.

Connect the console cable to the console port of the 1720 and to a PC (or Mac with proper cables) with VT100 emulation software. 9600, 8, none 1. This is required if the router has not been preconfigured. If the router has been preconfigured by us, you will be able to telnet to the LAN interface of the router.

Once you have gained access to the router you must enter enable mode by typing 'en':

Router>en

The router will prompt you for a password. Enter the password and the prompt will change from the ending with a '>' to ending with a '#'. At this point you type 'configure':

Router#configure <Return>

Configuring from terminal, memory, or network [terminal]? <Return>

Enter configuration commands, one per line. End with CNTL/Z.

Input the configuration from the appropriate template (see below) and press Control-Z when you are finished.

The **Cisco 1720** comes with the following:

Cables:

RJ45 Rolled Console Cable (included is RJ45 to DB25 adapter)

Ports:

One serial console port (RJ-45)

One 10/100 Ethernet port

Two WIC interface ports

Configuring the Cisco 1720 for LAN-ISDN

LAN-ISDN using Proprietary Scheme

```
interface BRI0
description [UNIQUE ARBITRARY LOGICAL NAME]
ip unnumbered FastEthernet0
no ip directed-broadcast
encapsulation ppp
dialer idle-timeout [IDLE TIME IN SECONDS]
dialer wait-for-carrier-time 10
dialer map ip 38.1.1.1 name [PAP LOGIN] [DIAL NUMBER]
dialer load-threshold [UTILIZATION THRESHOLD] either
dialer-group 1
isdn switch-type [SWITCH TYPE]
isdn spid1 [SPID1] [DN1]
isdn spid2 [SPID2] [DN2]
ppp pap sent-username [PAP LOGIN] password [PAP PASSWORD]
ppp multilink
!
interface FastEthernet0
ip address [ETHERNET IP ADDRESS] [SUBNET MASK]
ip broadcast-address [ETHERNET BROADCAST ADDRESS]
no ip directed-broadcast
!
ip classless
ip route 0.0.0.0 0.0.0.0 38.1.1.1
ip route 38.1.1.1 255.255.255.255 BRI0
!
access-list 101 permit ip any any
dialer-list 1 protocol ip list 101
```

Configuring the Cisco 1720 for LAN-ISDN

LAN-ISDN using BACP

```
interface BRI0
description [UNIQUE ARBITRARY LOGICAL NAME]
ip unnumbered FastEthernet0
no ip directed-broadcast
encapsulation ppp
dialer idle-timeout [IDLE TIME IN SECONDS]
dialer map ip 38.1.1.1 name [PAP LOGIN] [DIAL NUMBER]
dialer load-threshold [UTILIZATION THRESHOLD] either
dialer-group 1
isdn switch-type [SWITCH TYPE]
isdn spid1 [SPID1] [DN1]
isdn spid2 [SPID2] [DN2]
ppp pap sent-username [PAP LOGIN] password [PAP PASSWORD]
ppp multilink bap
ppp bap call request
ppp bap timeout pending 20
!
interface FastEthernet0
ip address [ETHERNET IP ADDRESS] [SUBNET MASK]
ip broadcast-address [ETHERNET BROADCAST ADDRESS]
no ip directed-broadcast
!
ip classless
ip route 0.0.0.0 0.0.0.0 38.1.1.1
ip route 38.1.1.1 255.255.255.255 BRI0
!
access-list 101 permit ip any any
dialer-list 1 protocol ip list 101
```